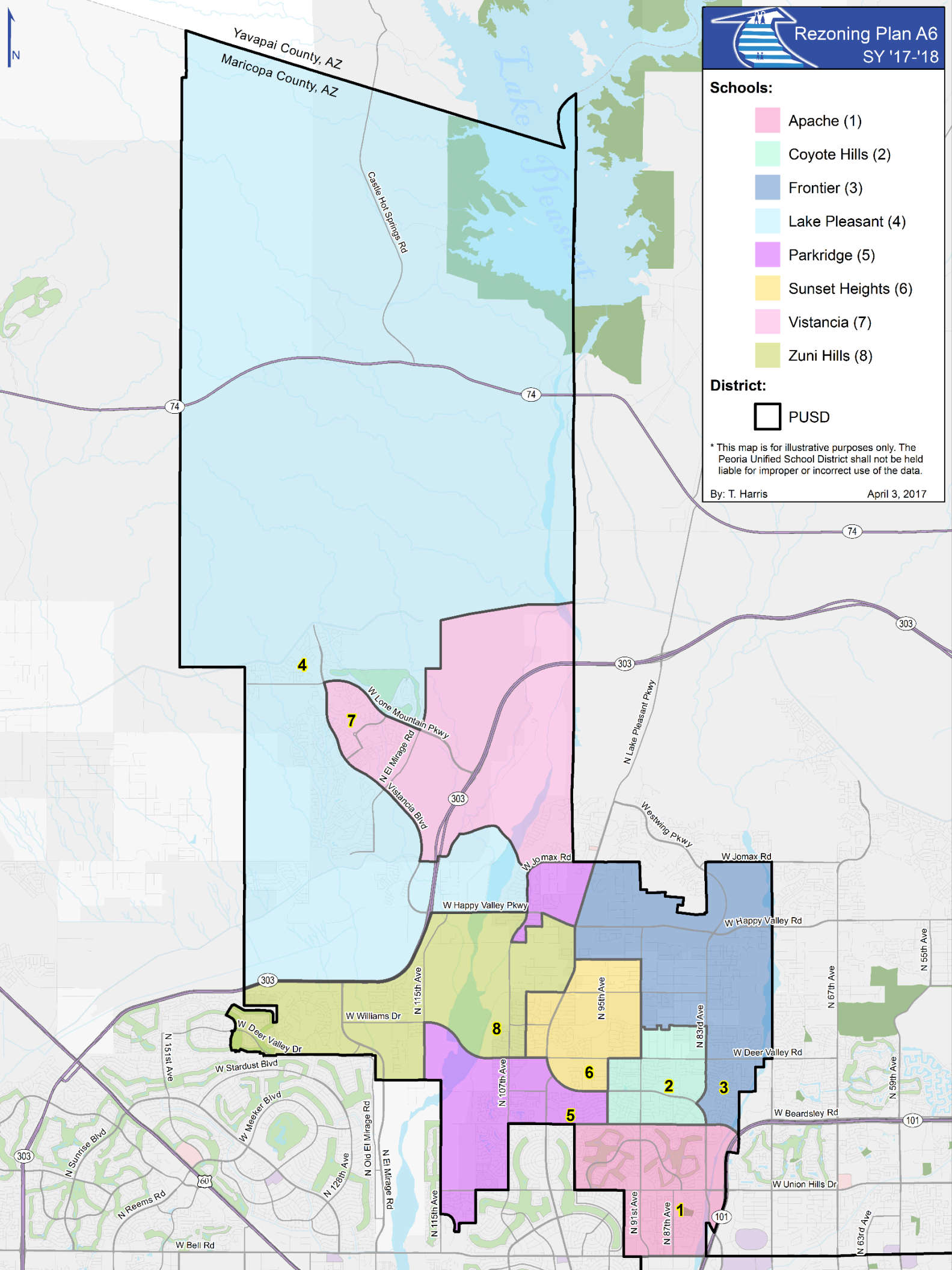


# Current Elementary Boundaries

## Residential Student Projections

School	Total Capacity	SY '17-'18		SY '18-'19		SY '19-'20	
		K-8	Capacity	K-8	Capacity	K-8	Capacity
Apache	1000	571	57%	544	54%	534	53%
Coyote Hills	1278	789	62%	782	61%	759	59%
Frontier	1200	753	63%	778	65%	768	64%
Lake Pleasant	1200	584	49%	937	78%	908	76%
Parkridge	1000	717	72%	690	69%	679	68%
Sunset Heights	1020	1136	<b>111%</b>	1374	<b>135%</b>	1390	<b>136%</b>
Vistancia	1200	683	57%	903	75%	912	76%
Zuni Hills	1200	1227	<b>102%</b>	1839	<b>153%</b>	1911	<b>159%</b>
<b>Total</b>	<b>9028</b>	<b>6460</b>	<b>72%</b>	<b>7847</b>	<b>87%</b>	<b>7861</b>	<b>87%</b>



# Approved Boundary Adjustment

**Residential Student Projections**

School	Total Capacity	SY '17-'18		SY '18-'19		SY '19-'20	
		K-8	Capacity	K-8	Capacity	K-8	Capacity
Apache	1000	571	57%	544	54%	534	53%
Coyote Hills	1278	988	77%	978	77%	959	75%
Frontier	1200	773	64%	883	74%	948	79%
Lake Pleasant	1200	767	64%	1154	96%	1134	95%
Parkridge	1000	759	76%	930	93%	933	93%
Sunset Heights	1020	782	77%	1001	98%	1000	98%
Vistancia	1200	735	61%	1136	95%	1147	96%
Zuni Hills	1200	1086	91%	1222	<b>102%</b>	1205	100%
<b>Total</b>	<b>9028</b>	<b>6461</b>	<b>72%</b>	<b>7848</b>	<b>87%</b>	<b>7860</b>	<b>87%</b>

